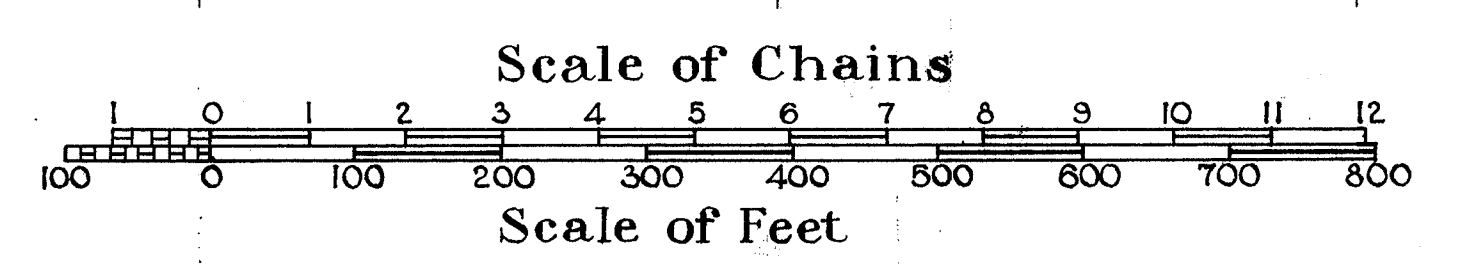
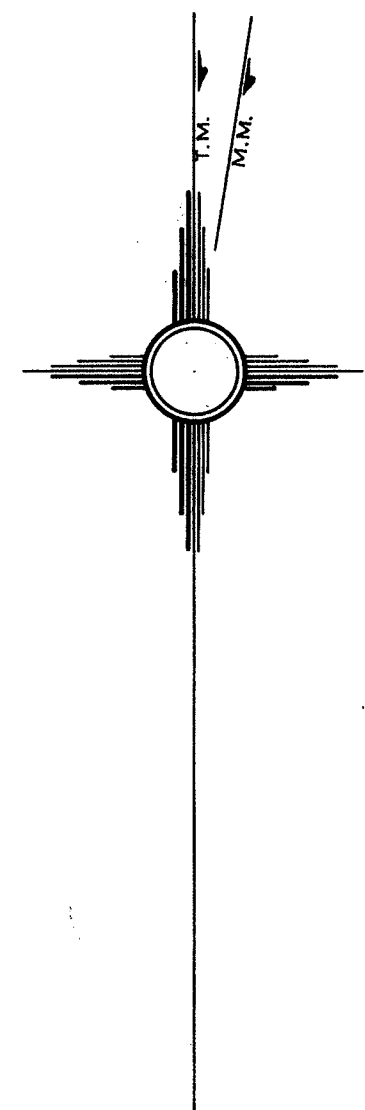
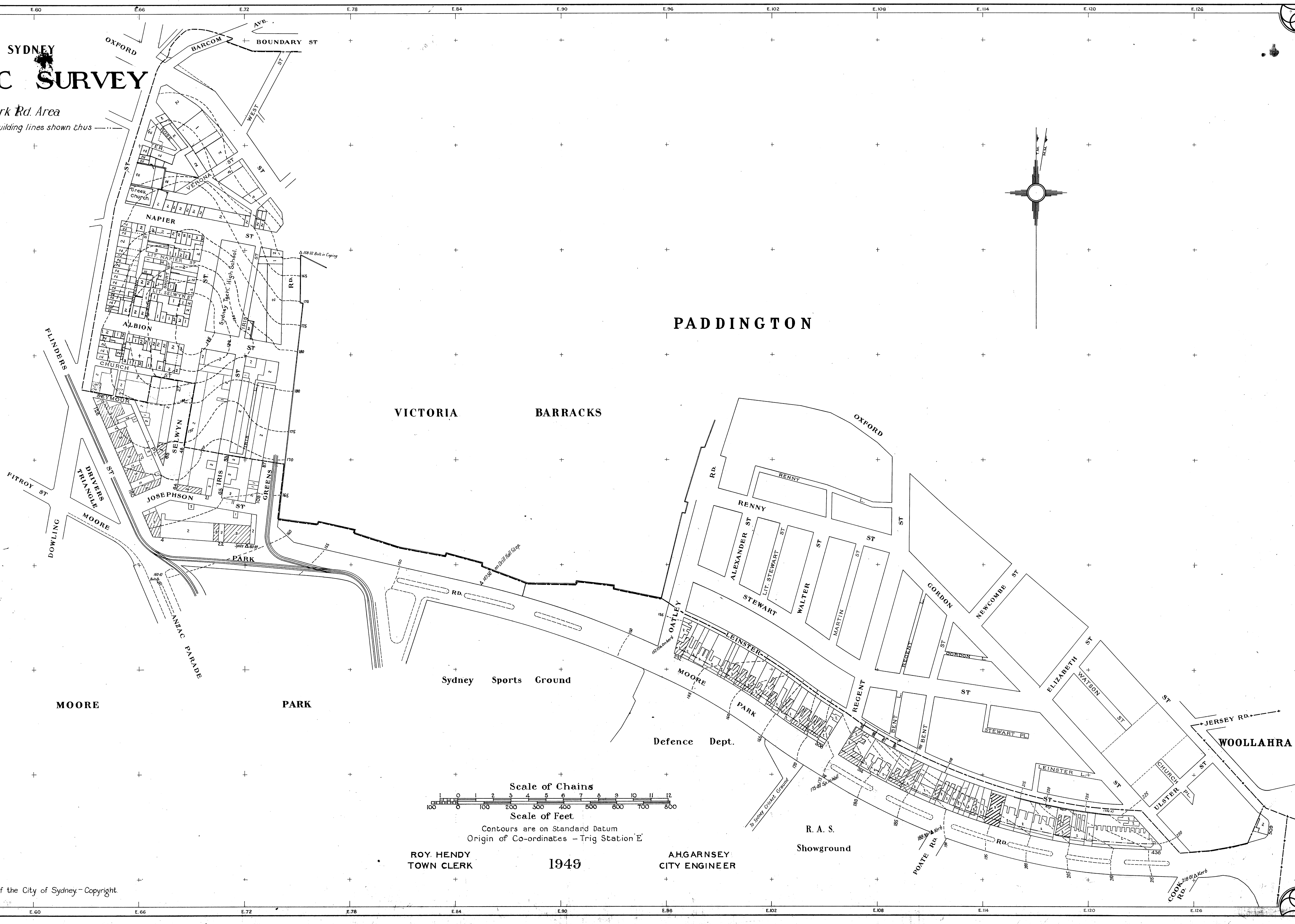


5A

# CITY OF SYDNEY CIVIC SURVEY

Moore Park Rd. Area

Proclaimed building lines shown thus



Contours are on Standard Datum  
Origin of Co-ordinates - Trig Station 'E'

ROY HENDY  
TOWN CLERK

1949

AHGARNSEY  
CITY ENGINEER

